



GMP
GENERAL
MICROTECHNOLOGY
& PHOTONICS

gentec-EO
PARTNERS for ACCURACY



POWER & ENERGY METERS



BEAM PROFILING



THZ MEASUREMENT

LASER BEAM MEASUREMENT & BEAM PROFILING

NEW PRODUCTS **2021**

WHO WE ARE

OUR FIELDS OF EXPERTISE



POWER & ENERGY METERS

We have the most complete range of laser measurement products in the industry. Our energy detectors cover from just a few fJ to several kJ and our power detectors span a wide range, from a few pW to tens of kW.



LASER BEAM PROFILING

If you need to know more about your beam diameter, intensity profile and divergence we have a full range of beam profilers, including cameras and laser beam quality measurement systems.



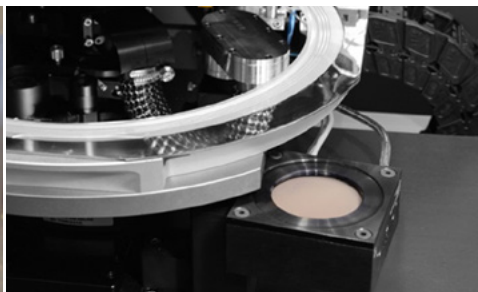
LARGE AREA CALORIMETERS

A Gentec-EO calorimeter is the only reliable solution available for the largest and highest energy laser beams. Through cooperation with leading research facilities, Gentec-EO has become the expert in high energy calorimeters.



THZ MEASUREMENT

We are proud to offer an extensive line of power and energy detectors for the terahertz spectrum. Our product line features easy plug-and-play solutions and complete application software.



CUSTOMIZED PRODUCTS & OEM

Whether your project is big or small, from simple adjustments of standard products to the conception of new solutions, we will work with you to design and manufacture the solution best tailored to your needs.



TRACEABLE CALIBRATION

At Gentec-EO we use only GOLD calibration standards, guaranteeing our customers the best accuracy on the market. Our in-house calibration expertise also includes a great flexibility to specific requirements.

OEM DETECTORS. 4 LEVELS OF INTEGRATION



Sensor only

Thermal sensor disk
External PCB available



Detector only

Complete sensor head with cooling
Analog signal output



Detector with PCB

Complete sensor head with cooling
Digital signal output



All-in-one detector + meter

Complete measurement system
Digital signal output

CUSTOMIZE: Dimensions, mounting holes, cable length, connectors, serial commands... Simply tell us what you need!

NEW RELEASES



PC INTERFACE FOR ALL DETECTORS

The U-LINK is our new PC interface that can replace all others! It is as small as the P-LINK, as fast as the S-LINK and as versatile as the M-LINK.

This PC interface can read ALL our detectors, for both power and energy measurement. It is available with either a USB or an RS-232 output.

■ SMALL, FAST & UNIVERSAL PC INTERFACE

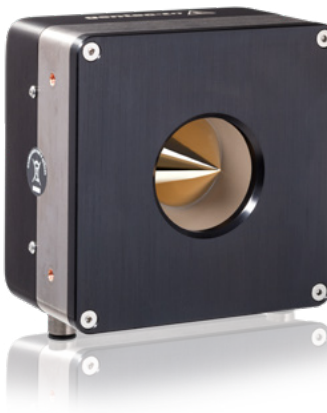


HIGH REPETITION RATES: UP TO 10 kHz

Our QE series of laser energy detectors now includes models tuned for high repetition rates. Measure every pulse at up to 10 kHz pulse-to-pulse.

Available in the QE12 series (12 x 12 mm aperture) and QE25 series (25 x 25 mm aperture).

■ MONITOR MULTI-kHz LASERS



HIGH POWER, SMALL BEAMS

With its gold reflector cone and redesigned geometry, the HP60A-15KW-GD can handle the high intensities of very small beams with up to 15 kW of continuous power. The area surrounding the cone is covered with our proprietary high damage threshold absorber.

The very low back reflections of the detector also ensure a safer working environment with high power lasers.

■ FOR SMALL BEAMS UP TO 15 kW

DISPLAYS &
PC INTERFACES

ENERGY DETECTORS

POWER DETECTORS

HIGH POWER SOLUTIONS

PHOTODETECTORS

THz DETECTORS

OEM DETECTORS

SPECIAL PRODUCTS

BEAM DIAGNOSTICS

U-LINK

Single Channel, PC-Based Universal Power and Energy Monitor



KEY FEATURES

- 1. THE UNIVERSAL PC-BASED METER**
Reads ALL Heads:
 - Power: thermopiles, photodetectors and pyroelectrics
 - Energy: thermopiles (in single shot mode), photodetectors and pyroelectrics
- 2. MEASURE fJ ENERGY LEVELS**
Thanks to a unique digital method for suppressing the noise on the lower ranges
- 3. EXTERNAL TRIGGER**
Synchronize your U-LINK to your pulsed laser or digital chopper
- 4. SYNCHRONIZE MULTIPLE CHANNELS**
With the "SYNC. OUT" port, you can plug multiple U-LINK devices together and create a low-cost multi-channel system.
- 5. SERIAL COMMANDS**
Serial commands are available on both versions to let you take full control

AVAILABLE MODELS



U-LINK (USB)



U-LINK (RS-232)



OUTPUT OPTIONS

- 1. USB OR RS-232 PORT**
 - Connects directly to a PC or PLC
 - Control your U-LINK with serial commands or with the PC-Gentec-EO software
 - USB available for the U-LINK (USB) model; RS-232 available with the U-LINK (RS-232) model
- 2. ANALOG OUTPUT**
 - Monitor your detector's amplified and anticipated signal with an external equipment such as a chart recorder, a voltmeter, etc.
 - The output signal is a DC voltage
 - Available for all U-LINK models
- 3. SYNCH. OUTPUT**
 - Synchronize the acquisition of energy measurement between multiple U-LINK units
 - Available for the U-LINK (USB) model only

ACCESSORIES



USB Cable
(Model Number: 202372)



RS-232 Cable
(Model Number: 201860)



Pelican Carrying Case



Additional 9V Power Supply
(RS-232 version only)

U-LINK



SPECIFICATIONS

	U-LINK (USB)	U-LINK (RS-232)
DETECTOR TYPES	ALL MODELS: Thermopiles, Pyroelectrics, Photodetectors	ALL MODELS: Thermopiles, Pyroelectrics, Photodetectors
DISPLAY	1-Channel / PC-Based	1-Channel / PC-Based
POWER METER SPECIFICATIONS		
Power Range	4 pW to 30 kW	4 pW to 30 kW
Monitor Accuracy	$\pm 0.5 \% \pm 3 \mu\text{V}$	$\pm 0.5 \% \pm 3 \mu\text{V}$
Statistics	Current Value, Max, Min, Average, Std Dev., RMS & PTP Stability, Time	Current Value, Max, Min, Average, Std Dev., RMS & PTP Stability, Time
ENERGY METER SPECIFICATIONS		
Energy Range	2 fJ to 30 kJ	2 fJ to 30 kJ
Monitor Accuracy	1 % $\pm 50 \mu\text{V}$ (<500 Hz) 2 % $\pm 50 \mu\text{V}$ (500 Hz - 10 kHz)	1 % $\pm 50 \mu\text{V}$ (<500 Hz) 2 % $\pm 50 \mu\text{V}$ (500 Hz - 10 kHz)
Software Trigger Level	0.1 to 99.9 %, 0.1 % resolution, default 2 %	0.1 to 99.9 %, 0.1 % resolution, default 2 %
Repetition Rate ^a	10 kHz	10 kHz
Real Time Data Transfer	10 kHz maximum	1 kHz maximum
Statistics	Current Value, Max, Min, Average, Std Dev., RMS & PTP Stability, Pulse #, Repetition Rate, Average Power	Current Value, Max, Min, Average, Std Dev., RMS & PTP Stability, Pulse #, Repetition Rate, Average Power
DETECTOR COMPATIBILITY		
Thermopile	Average Power & Single Shot Energy	Average Power & Single Shot Energy
Pyroelectric	Pulse Energy & Average Power	Pulse Energy & Average Power
Photodetectors	Average Power & Pulse Energy	Average Power & Pulse Energy
GENERAL SPECIFICATIONS		
Digital Display	Computer Screen	Computer Screen
Data Display	With PC-Gentec-EO: Real Time, Scope, Averaging, Statistics and Digital Tuning Needle	With PC-Gentec-EO: Real Time, Scope, Averaging, Statistics and Digital Tuning Needle
Serial Commands and Data Transfer Via	USB Mini-B	RS-232
Analog Output	0-2 Volts, Full Scale, $\pm 1\%$, user-defined	0-2 Volts, Full Scale, $\pm 1\%$, user-defined
External Trigger	3.3 to 12 V	N/A
Dimensions	57W x 26H x 91D mm	57W x 26H x 91D mm
Weight	0.12 kg	0.12 kg
ORDERING INFORMATION		
Product Name	U-LINK (USB)	U-LINK (RS-232)
Product Number	203510	203994

Specifications are subject to change without notice

a. Maximum repetition rate and data transfer rate may vary with PC and detector speeds.



QE12HR

12 x 12 mm, 0.7 μ J - 3.9 J, tuned for high repetition rates



KEY FEATURES

- 1. MODULAR CONCEPT**
Increase the power capability of your detector:
2 different cooling modules
- 2. LOW NOISE LEVEL**
0.7 μ J for the MB coating
- 3. QED ATTENUATOR AVAILABLE**
Measure up to 5X higher energies
- 4. NEW MODELS FOR HIGH REPETITION RATES**
The QE12HR models are tuned for short pulses with high repetition rates (up to 10 kHz)
- 5. TEST TARGET INCLUDED**
With the MB models

AVAILABLE MODELS



QE12HR-S-MB
(Broadband-Convection)



QE12HR-H-MB
(Broadband-Heatsink)



QE12HR-H-MT
(Metallic-Heatsink)

ACCESSORIES



Stand with Delrin Post
(Model Number: 200428)



DB-15 to BNC Adaptor
(Model Number: 200036)



QED-12 Attenuator
(Model Number: 201200)



Pelican Carrying Case

OUTPUT OPTIONS

- 1. SMART DB15 CONNECTOR**
 - Contains all the calibration data
 - Compatible with our displays & PC interfaces
- 2. INTEGRA ALL-IN-ONE METER**
 - No external meter required
 - Connects directly to a PC
 - Three models available:
 - USB output (-INT)
 - RS-232 output (-IDR)
 - RS-232 with external trigger (-INE)

COMPATIBLE DISPLAYS & PC INTERFACES

MAESTRO

U-LINK

S-LINK

M-LINK

QE12HR



*Also traceable to NRC-CNRC

SPECIFICATIONS

	QE12HR-S-MB	QE12HR-S-MB-QED	QE12HR-H-MB	QE12HR-H-MB-QED	QE12HR-H-MT
MAX MEASURABLE ENERGY ^a	0.85 J	3.9 J	0.85 J	3.9 J	0.70 J
MAX REPETITION FREQUENCY ^b	1 kHz	1 kHz	1 kHz	1 kHz	10 kHz ^c
APERTURE	12 x 12 mm	9 x 9 mm	12 x 12 mm	9 x 9 mm	12 x 12 mm
MEASUREMENT CAPABILITY					
Spectral Range	0.19 – 20 μm	0.3 - 2.1 μm	0.19 – 20 μm	0.3 - 2.1 μm	0.19 – 20 μm
Calibrated Spectral Range	0.248 – 2.1 μm	0.532 – 2.1 μm	0.248 – 2.1 μm	0.532 – 2.1 μm	0.248 – 2.1 μm
Maximum Measurable Energy ^{a,d}					
1064 nm, 7 ns, 10 Hz	0.85 J	3.9 J	0.85 J	3.9 J	0.70 J
266 nm, 7 ns, 10 Hz	0.70 J	0.81 J	0.70 J	0.81 J	0.10 J
Noise Equivalent Energy ^e	1.4 μJ	2.8 μJ	1.4 μJ	2.8 μJ	1 μJ
Max Repetition Frequency ^b	1 kHz	1 kHz	1 kHz	1 kHz	10 kHz ^c
Maximum Pulse Width	40 μs	40 μs	40 μs	40 μs	4 μs
Rise Time (typical 0-100 %)	70 μs	70 μs	70 μs	70 μs	7 μs
Calibration Uncertainty ^f	$\pm 3\%$	$\pm 3\%$	$\pm 3\%$	$\pm 3\%$	$\pm 3\%$
Repeatability	<0.5 %	<0.5 %	<0.5 %	<0.5 %	<0.5 %
DAMAGE THRESHOLDS					
Maximum Average Power	3 W	7.5 W	5 W	12.5 W	5 W
Maximum Energy Density					
1064 nm, 7 ns, single shot	0.6 J/cm ²	16 J/cm ²	0.6 J/cm ²	16 J/cm ²	0.50 J/cm ²
1064 nm, 7 ns, 10 Hz	0.6 J/cm ²	8 J/cm ²	0.6 J/cm ²	8 J/cm ²	0.50 J/cm ²
532 nm, 7 ns, 10 Hz	0.6 J/cm ²	6 J/cm ²	0.6 J/cm ²	6 J/cm ²	0.07 J/cm ²
266 nm, 7 ns, 10 Hz	0.5 J/cm ²	1 J/cm ²	0.5 J/cm ²	1 J/cm ²	0.07 J/cm ²
Maximum Average Power Density ^g	10 W/cm ²	600 W/cm ²	10 W/cm ²	600 W/cm ²	10 W/cm ²
PHYSICAL CHARACTERISTICS					
Aperture	12 x 12 mm	9 x 9 mm	12 x 12 mm	9 x 9 mm	12 x 12 mm
Absorber	MB	MB	MB	MB	MT
Dimensions	36H x 36W x 14D mm	39H x 41W x 19D mm	36H x 36W x 33D mm	39H x 41W x 38D mm	36H x 36W x 33D mm
Weight	87 g	87 g	117 g	117 g	117 g
ORDERING INFORMATION					
Detector with Smart DB15 Connector	QE12HR-S-MB-D0	QE12HR-S-MB-QED-D0	QE12HR-H-MB-D0 P/N 203895	QE12HR-H-MB-QED-D0 P/N 203897	QE12HR-H-MT-D0 P/N 205104
INTEGRA All-in-one Meter & Detector					
USB output	QE12HR-S-MB-INT-D0	QE12HR-S-MB-QED-INT-D0	QE12HR-H-MB-INT-D0 P/N 203903	QE12HR-H-MB-QED-INT-D0 P/N 203905	QE12HR-H-MT-INT-D0
RS-232 output	QE12HR-S-MB-IDR-D0	QE12HR-S-MB-QED-IDR-D0	QE12HR-H-MB-IDR-D0 P/N 205363	QE12HR-H-MB-QED-IDR-D0 P/N 205364	
USB output + external trigger	QE12HR-S-MB-INE-D0	QE12HR-S-MB-QED-INE-D0	QE12HR-H-MB-INE-D0	QE12HR-H-MB-QED-INE-D0	QE12HR-H-MT-INE-D0

Specifications are subject to change without notice // Compatible stand: P/N 200428

- a. Not exceeding maximum average power.
b. With the IDR version, measured values are sampled when the repetition rate is > 200 Hz.
c. Maximum 5.2 kHz with INT version.
d. Increasing pulse width increases the maximum measurable energy
e. Nominal value, actual value depends on electrical noise in the measurement system.
f. Excludes non-linearities.
g. At maximum power.



QE25HR

25 x 25 mm, 2 μ J - 23 J, tuned for high repetition rates



KEY FEATURES

- 1. MODULAR CONCEPT**
Increase the power capability of your detector:
2 different cooling modules
- 2. LOW NOISE LEVEL**
2 μ J for the MT coating
- 3. QED ATTENUATOR AVAILABLE**
Measure up to 5X higher energies
- 4. NEW MODELS FOR HIGH REPETITION RATES**
The QE25HR models are tuned for short pulses with high repetition rates (up to 10 kHz)
- 5. TEST TARGET INCLUDED**
With the MB models

AVAILABLE MODELS



QE25HR-S-MB
(Broadband-Convection)



QE25HR-H-MB
(Broadband-Heatsink)



QE25HR-H-MT
(Metallic-Heatsink)

OUTPUT OPTIONS

- 1. SMART DB15 CONNECTOR**
 - Contains all the calibration data
 - Compatible with our displays & PC interfaces
- 2. INTEGRA ALL-IN-ONE METER**
 - No external meter required
 - Connects directly to a PC
 - Three models available:
USB output (-INT)
RS-232 output (-IDR)
RS-232 with external trigger (-INE)

ACCESSORIES



Stand with Delrin Post
(Model Number: 200428)



DB-15 to BNC Adaptor
(Model Number: 200036)



QED-25 Attenuator
(Model Number: 201199)



Pelican Carrying Case

COMPATIBLE DISPLAYS & PC INTERFACES

MAESTRO

U-LINK

S-LINK

M-LINK

QE25HR



*Also traceable to NRC-CNRC

SPECIFICATIONS

	QE25HR-S-MB	QE25HR-S-MB-QED	QE25HR-H-MB	QE25HR-H-MB-QED	QE25HR-H-MT
MAX MEASURABLE ENERGY ^a	3.8 J	23 J	3.8 J	23 J	3.0 J
MAX REPETITION FREQUENCY ^b	1 kHz	1 kHz	1 kHz	1 kHz	10 kHz ^c
APERTURE	25 x 25 mm	22 x 22 mm	25 x 25 mm	22 x 22 mm	25 x 25 mm
MEASUREMENT CAPABILITY					
Spectral Range	0.19 – 20 μm	0.3 - 2.1 μm	0.19 – 20 μm	0.3 - 2.1 μm	0.19 – 20 μm
Calibrated Spectral Range	0.248 – 2.1 μm	0.308 – 2.1 μm	0.248 – 2.1 μm	0.308 – 2.1 μm	0.248 – 2.1 μm
Maximum Measurable Energy ^{a,d}					
1064 nm, 7 ns, 10 Hz	3.8 J	23 J	3.8 J	23 J	3.0 J
266 nm, 7 ns, 10 Hz	3.1 J	4.8 J	3.1 J	4.8 J	0.44 J
Noise Equivalent Energy ^e	10 μJ	20 μJ	10 μJ	20 μJ	3 μJ
Max Repetition Frequency ^b	1 kHz	1 kHz	1 kHz	1 kHz	10 kHz ^c
Maximum Pulse Width	40 μs	40 μs	40 μs	40 μs	4 μs
Rise Time (typical 0-100 %)	70 μs	70 μs	70 μs	70 μs	7 μs
Calibration Uncertainty ^f	$\pm 3\%$	$\pm 3\%$	$\pm 3\%$	$\pm 3\%$	$\pm 3\%$
Repeatability	<0.5 %	<0.5 %	<0.5 %	<0.5 %	<0.5 %
DAMAGE THRESHOLDS					
Maximum Average Power	5 W	15 W	10 W	30 W	10 W
Maximum Energy Density					
1064 nm, 7 ns, single shot	0.6 J/cm ²	16 J/cm ²	0.6 J/cm ²	16 J/cm ²	0.50 J/cm ²
1064 nm, 7 ns, 10 Hz	0.6 J/cm ²	8 J/cm ²	0.6 J/cm ²	8 J/cm ²	0.50 J/cm ²
532 nm, 7 ns, 10 Hz	0.6 J/cm ²	6 J/cm ²	0.6 J/cm ²	6 J/cm ²	0.07 J/cm ²
266 nm, 7 ns, 10 Hz	0.5 J/cm ²	1 J/cm ²	0.5 J/cm ²	1 J/cm ²	0.07 J/cm ²
Maximum Average Power Density ^g	10 W/cm ²	600 W/cm ²	10 W/cm ²	600 W/cm ²	10 W/cm ²
PHYSICAL CHARACTERISTICS					
Aperture	25 x 25 mm	22 x 22 mm	25 x 25 mm	22 x 22 mm	25 x 25 mm
Absorber	MB	MB	MB	MB	MT
Dimensions	50H x 50W x 14D mm	53H x 55W x 19D mm	50H x 50W x 53D mm	53H x 55W x 58D mm	50H x 50W x 53D mm
Weight	120 g	120 g	193 g	193 g	193 g
ORDERING INFORMATION					
Detector with Smart DB15 Connector	QE25HR-S-MB-D0	QE25HR-S-MB-QED-D0	QE25HR-H-MB-D0 P/N 203899	QE25HR-H-MB-QED-D0 P/N 203901	QE25HR-H-MT-D0 P/N 205105
INTEGRA All-in-one Meter & Detector					
USB output	QE25HR-S-MB-INT-D0	QE25HR-S-MB-QED-INT-D0	QE25HR-H-MB-INT-D0 P/N 203907	QE25HR-H-MB-QED-INT-D0 P/N 203909	QE25HR-H-MT-INT-D0
RS-232 output	QE25HR-S-MB-IDR-D0	QE25HR-S-MB-QED-IDR-D0	QE25HR-H-MB-IDR-D0 P/N 205367	QE25HR-H-MB-QED-IDR-D0 P/N 205366	
USB output + external trigger	QE25HR-S-MB-INE-D0	QE25HR-S-MB-QED-INE-D0	QE25HR-H-MB-INE-D0	QE25HR-H-MB-QED-INE-D0	QE25HR-H-MT-INE-D0

Specifications are subject to change without notice // Compatible stand: P/N 200428

- a. Not exceeding maximum average power.
b. With the IDR version, measured values are sampled when the repetition rate is > 200 Hz.
c. Maximum 5.2 kHz with INT version.
d. Increasing pulse width increases the maximum measurable energy
e. Nominal value, actual value depends on electrical noise in the measurement system.
f. Excludes non-linearities.
g. At maximum power.



HP60

60 mm Ø with cone reflector, 300 W – 15 000 W



KEY FEATURES

- HIGH POWER HANDLING**
Handles up to 15 kW of continuous power. Custom models available for higher powers.
- LOW BACK REFLECTIONS**
The cone reflector traps most of the laser's power inside the detector head. With its TUBE extension, the HP60A-15KW-GD-TUBE has the lowest back reflection rating: under 2%.
- AVAILABLE WITH YAG AND CO₂ CALIBRATIONS**
All HP models can be calibrated at YAG and CO₂ wavelengths with a calibration uncertainty of $\pm 5\%$
- DIRECT USB CONNECTION TO A PC**
Each head comes with both a DB-15 connector (for use with a Gentec-EO display device) and a USB output for direct connection to a PC
- TRACK WATER PARAMETERS**
Water flow and temperature are monitored in real time and displayed continuously

AVAILABLE MODELS



HP60A-10KW-GD
(10000W-Small Beams)



HP60A-15KW-GD
(15000W-Small Beams)

NOW AVAILABLE!



TUBE EXTENSION TO REDUCE BACK REFLECTIONS

All HP models can be fitted with a water-cooled absorbing TUBE to reduce the back reflections. The TUBE extension is backward compatible so you can send your already-purchased HP detector to be retrofitted*.

* The HP detector needs to be sent back to be retrofitted and recalibrated (Calibration is included)

ACCESSORIES



Stand with Steel Post
(Model Number: 201102)



Extension Cables
(4, 15, 20 or 25 m)*



5 m USB Cable
(Included)



Water Filter
(Metric: 202984, Imperial: 202990)



Pelican Carrying Case

OUTPUT OPTIONS

- SMART DB15 CONNECTOR**
 - Contains all the calibration data
 - Compatible with our displays & PC interfaces
- USB PORT**
 - No external meter required
 - Connects directly to a PC
 - Included in all HP models
- BLU WIRELESS METER**
 - Up to 30 m range without cables
 - Connects via Bluetooth to a PC

COMPATIBLE DISPLAYS

MAESTRO
TUNER
UNO

* A USB Power Adaptor will be necessary if the HP is used with a DB-15 Extension Cable.

HP60



*Also traceable to NRC-CNRC

SPECIFICATIONS

	HP60A-10KW-GD	HP60A-15KW-GD	HP60A-15KW-GD-TUBE
MAX AVERAGE POWER	10 kW	15 kW	15 kW
APERTURE	60 mm Ø	60 mm Ø	70 mm Ø
COOLING METHOD	Water-Cooled	Water-Cooled	Water-Cooled
MEASUREMENT CAPABILITY			
Spectral Range	0.8 - 12 µm	0.8 - 12 µm	0.8 - 12 µm
Calibrated Spectral Range	0.8 - 2.1 µm	0.8 - 2.1 µm	0.8 - 2.1 µm
Noise Equivalent Power ^a	10 W	15 W	15 W
Minimum Average Power ^b	300 W	500 W	500 W
Rise Time (nominal)	12 s	15 s	15 s
Back Reflections	10 %	5 - 10 %	1 - 2 %
Calibration Uncertainty	±5 % at 1064 nm & 1070 nm	±5 % at 1064 nm & 1070 nm	±5 % at 1064 nm & 1070 nm
Repeatability	±2 %	±2 %	±2 %
Linearity with Power	±2 %	±2 %	±2 %
Linearity with Beam Diameter	±2.0 %	±2.5 %	±2.5 %
Linearity with Beam Position ^c	±3.0 % c	±4.0 %	±4.0 %
DAMAGE THRESHOLDS			
Maximum Average Power Density ^d			
1 kW	70 kW/cm ²	70 kW/cm ²	70 kW/cm ²
5 kW	35 kW/cm ²	35 kW/cm ²	35 kW/cm ²
10 kW	20 kW/cm ²	20 kW/cm ²	20 kW/cm ²
15 kW		10 kW/cm ²	10 kW/cm ²
PHYSICAL CHARACTERISTICS			
Aperture	60 mm Ø	60 mm Ø	70 mm Ø tube aperture
Absorber	GD (Cone reflector)	GD (Cone reflector)	GD (Cone reflector)
Required Cooling Flow ^e	(6 - 8) LPM < ±1 LPM/min	(8 - 10) LPM < ±1 LPM/min	(8 - 10) LPM < ±1 LPM/min
Cooling Water			
Temperature Range	15 – 25 °C	15 – 25 °C	15 – 25 °C
Rate of Temperature Change	< ±3°C/min	< ±3°C/min	< ±3°C/min
Maximum Water Pressure (input)	413 kPa (60 psi)	413 kPa (60 psi)	413 kPa (60 psi)
Output Connectors	DB15 cable & USB port	DB15 cable & USB port	DB15 cable & USB port
Dimensions	127H x 127W x 97D mm	153H x 153W x 97D mm	153H x 153W x 272D mm
Weight	6 kg	10 kg	15 kg
ORDERING INFORMATION			
Standard model: DB15 + USB output			
Metric water fittings	HP60A-10KW-GD-MET-D0 P/N 201305M	HP60A-15KW-GD-MET-D0 P/N 205219M	HP60A-15KW-GD-TUBE-MET-D0 P/N 205469M
Imperial water fittings	HP60A-10KW-GD-IMP-D0 P/N 201305I	HP60A-15KW-GD-IMP-D0 P/N 205219I	HP60A-15KW-GD-TUBE-IMP-D0 P/N 205469I
BLU: Wireless (Bluetooth) + USB output			
Metric water fittings	HP60A-10KW-GD-BLU-MET-D0	HP60A-15KW-GD-BLU-MET-D0	HP60A-15KW-GD-BLU-TUBE-MET-D0
Imperial water fittings	HP60A-10KW-GD-BLU-IMP-D0	HP60A-15KW-GD-BLU-IMP-D0	HP60A-15KW-GD-BLU-TUBE-IMP-D0

Specifications are subject to change without notice // Compatible stand: P/N 201102

- a. Nominal value, actual value depends on electrical noise in the measurement system.
b. For lower powers, call your Gentec-EO representative.
c. For a beam size of 20 % of the aperture area, moved across 80 % of the aperture area.
d. At 1064 nm, 1.07-1.08 µm and 10.6 µm, for beams < 50 mm Ø.
e. > 1 min. contact Gentec-EO for deionized water cooling module option.



LEADER IN LASER BEAM MEASUREMENT **SINCE 1972**

www.gmp.ch

GMP SA
GMP SA

Main office: Avenue des Baumettes 17
Büro Zürich: Dübendorfstrasse 11a

CH-1020 Renens
CH-8117 Fällanden

Tél. 021 633 21 21
Tel. 044 825 34 00

Fax. 021 633 21 29
Fax. 044 825 34 01

info@gmp.ch
info@gmp.ch