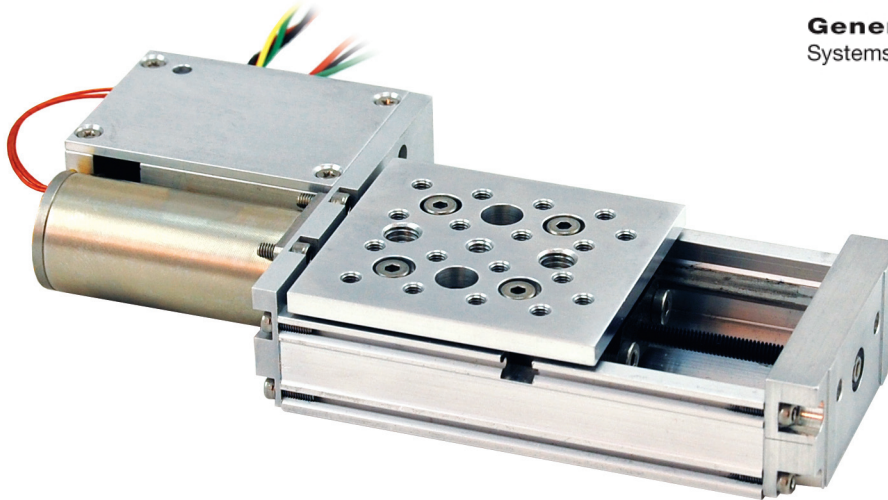


High Vacuum Motorized Translation Stages: T-LSM-SV2

GMP

General Microtechnology & Photonics
Systems for Industry, Research, Telecom & Medicine



- **Integrated motor and controller**
- **High vacuum compatible to 10^{-6} torr**
- **Daisy chains with other T-series devices inside vacuum chamber**
- **Up to 16 mm/s speed and up to 16 N thrust**

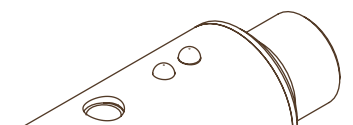
Zaber's T-LSM-SV2 devices are computer-controlled, high-vacuum, motorized linear stages with a very compact size. They are stand-alone units requiring only a standard 15V power supply. These stages connect to the RS-232 port of any computer and can be daisy-chained with up to 254 units per chain. They can also be chained with any other T-Series products. Convenient 6-pin mini din cables on the unit allow for direct interconnection between units in close proximity. For longer distances, a standard cable extension can be used.

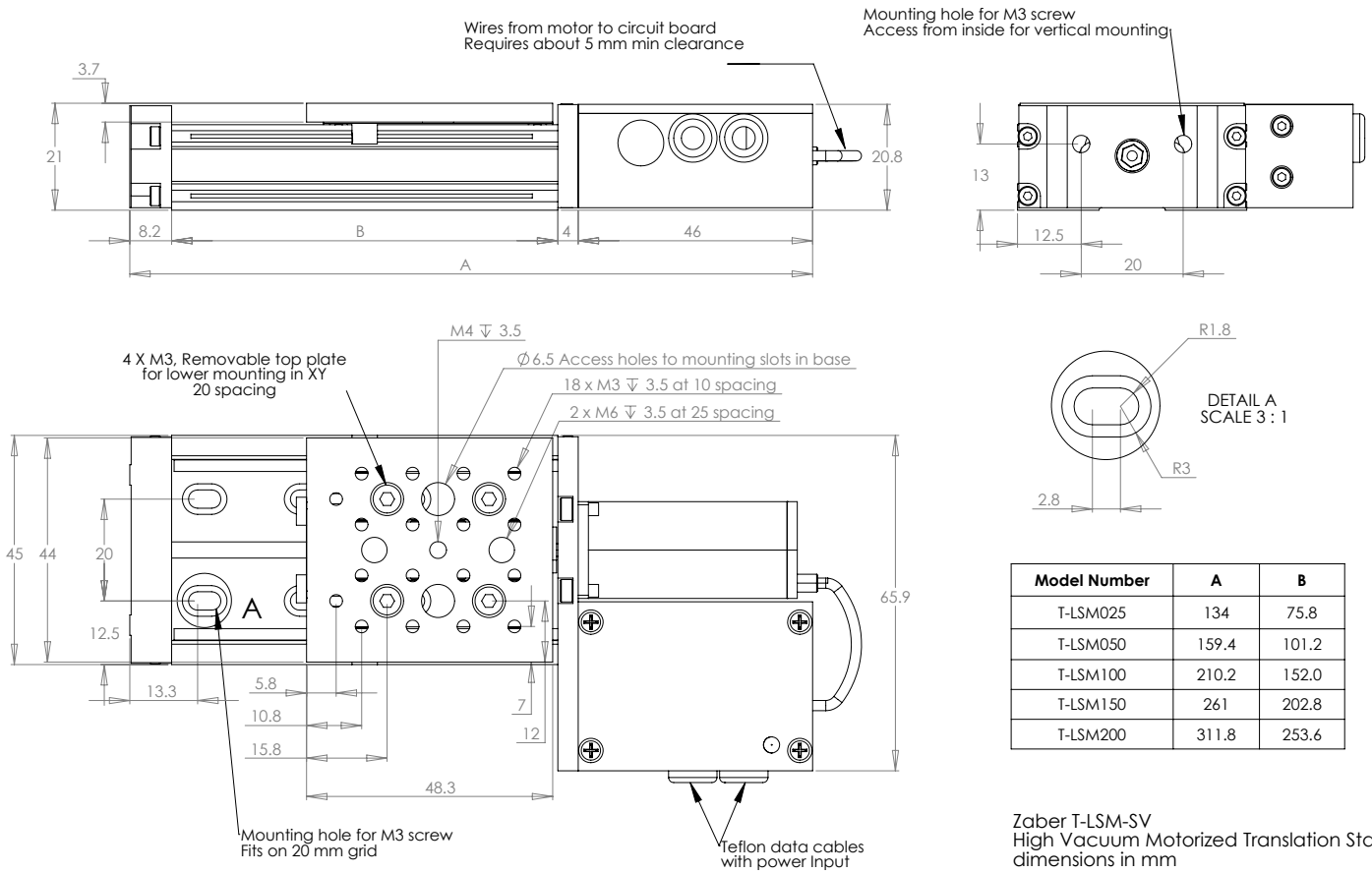
Installation

One or more stages can be connected to the RS-232 port (or USB port with optional adaptor) of any computer. Multiple devices, including any T-Series products, can be daisy-chained to a single port. Convenient 6-pin mini din cables on the stage allow for direct interconnection between devices in close proximity. For longer distances, longer distances, we offer standard cable extensions.

Computer Control

We provide software so you can easily control your Zaber devices. Zaber's intuitive Windows software makes it easy to control the speed and position of the unit and change the device settings. After completing a move command, the stage will report its position through the RS-232 link. Built-in scripting allows you to easily set up complex automation routines. For Labview users, we offer a free, certified Labview driver. For a detailed list of available commands see the user's manual.





Zaber T-LSM-SV
High Vacuum Motorized Translation Stage
dimensions in mm

Motorized Linear Stages: T-LSM-SV2

*Model	Travel Range (mm)	Microstep Size (Theoretical Resolution) (μ m)	Accuracy (μ m)	Repeatability (μ m)	Backlash (μ m)	Maximum Speed (mm/s)	Maximum Centred Load (N)	Maximum Cantilever Load (N-cm)	Maximum Continuous Thrust (N)	Weight (kg)
T-LSM025A-SV2	25.4	0.048	+/- 4	< 1	< 3	4	100	300	16	0.31
T-LSM025B-SV2	25.4	0.19	+/- 9	< 4	< 13	17	100	300	6	0.31
T-LSM050A-SV2	50.8	0.048	+/- 8	< 1	< 3	4	100	300	16	0.32
T-LSM050B-SV2	50.8	0.19	+/- 13	< 4	< 13	17	100	300	6	0.32
T-LSM100A-SV2	101.6	0.048	+/- 16	< 1	< 3	4	100	300	16	0.35
T-LSM100B-SV2	101.6	0.19	+/- 21	< 4	< 13	17	100	300	6	0.35
T-LSM150A-SV2	152.4	0.048	+/- 24	< 1	< 3	4	100	300	16	0.40
T-LSM150B-SV2	152.4	0.19	+/- 29	< 4	< 13	17	100	300	6	0.40
T-LSM200A-SV2	203.2	0.048	+/- 32	< 1	< 3	4	100	300	16	0.42
T-LSM200B-SV2	203.2	0.19	+/- 37	< 4	< 13	17	100	300	6	0.42

www.gmp.ch

GMP SA Siège principale: Avenue des Baumettes 17
GMP SA Büro Zürich: Dübendorfstrasse 11a

CH-1020 Renens +41 21 633 21 21
CH-8117 Fällanden +41 44 825 34 00

Fax. +41 21 633 21 29 info@gmp.ch
Fax. +41 44 825 34 01 so@gmp.ch